

# What's My Size?

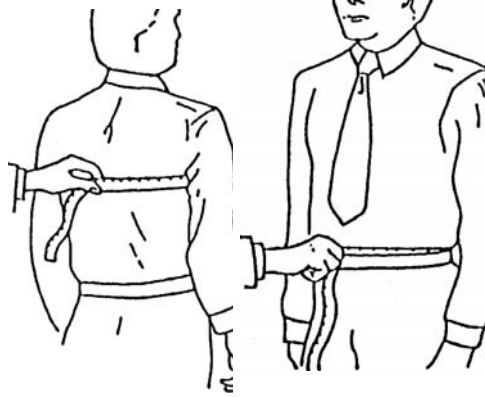
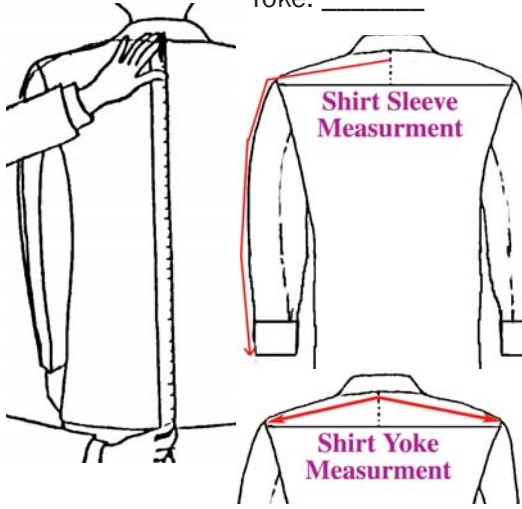
A sneaky, self-serving device designed to crush whatever remains of your self-esteem ... and reduce the frequency of size exchanges that we make at the same time. (Well ... at least you get a free tape measure out of the deal.)

Complete underwear, intimates, and outerwear size information: <http://www.customshirt1.com/SizingInformation01.htm> ... or just go to our site and click "Sizing Information" at the top of any page.

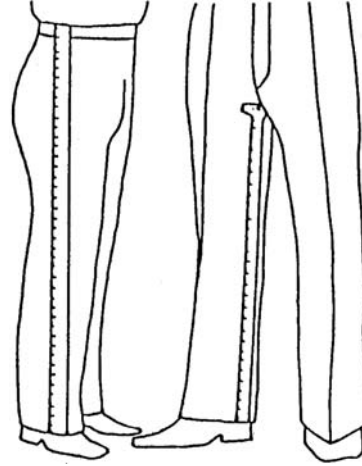
**CustomShirt1.com**

T:866-267-7909 • Int'l.+01-631-267-7909  
HereToServeYou@CustomShirt1.com

Coat Length: \_\_\_\_\_  
Length: \_\_\_\_\_  
Sleeve: L: \_\_\_\_\_ R: \_\_\_\_\_  
Yoke: \_\_\_\_\_

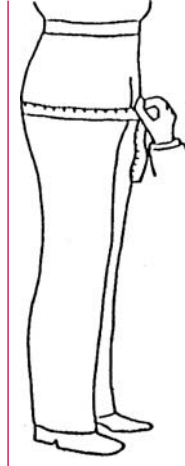


For Chest be sure to go around fullest part. Measure Pants Waist at belt line; Shirt Waist at fullest point.  
Chest: \_\_\_\_\_ Pants waist: \_\_\_\_\_  
Shirt Waist: \_\_\_\_\_



Measure Inseam and Outseam as shown. The "Rise" is the difference between the two.

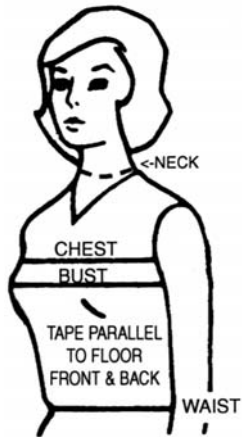
Trousers: \_\_\_\_\_  
Inseam: \_\_\_\_\_  
Outseam: \_\_\_\_\_  
Rise: \_\_\_\_\_



When measuring Seat be sure to remove all items from pockets and measure at the fullest point of the posterior.

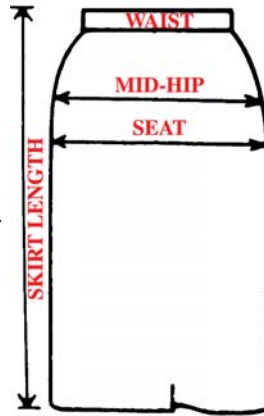
Seat: \_\_\_\_\_  
Notes: \_\_\_\_\_  
\_\_\_\_\_  
\_\_\_\_\_  
\_\_\_\_\_

Tops: \_\_\_\_\_  
Neck: \_\_\_\_\_  
Chest: \_\_\_\_\_  
Bust: \_\_\_\_\_  
Waist: \_\_\_\_\_

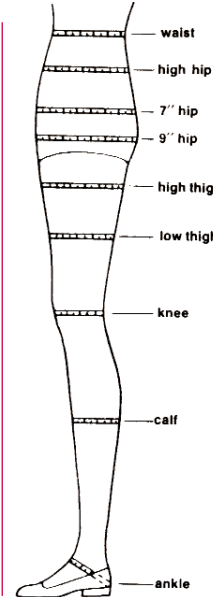


When measuring neck, do not measure tightly. For chest, bust, and waist keep the tape measure snug.

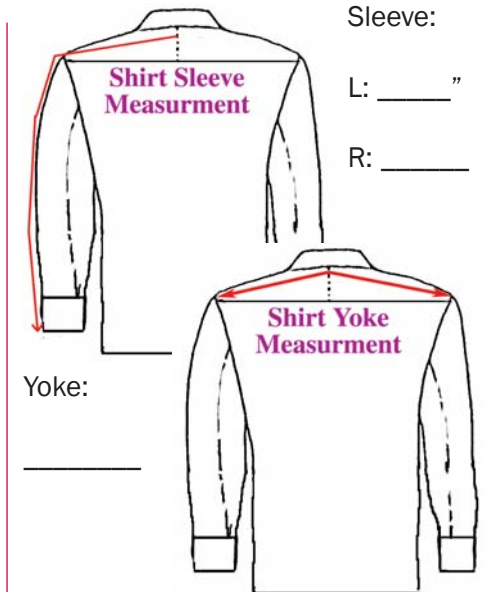
Skirt: \_\_\_\_\_  
Waist: \_\_\_\_\_  
Mid-hip: \_\_\_\_\_  
Seat: \_\_\_\_\_  
Length: \_\_\_\_\_



All measurements should be taken snugly for an accurate pattern.



Pants: \_\_\_\_\_  
Waist: \_\_\_\_\_  
High-hip: \_\_\_\_\_  
7"-hip: \_\_\_\_\_  
9"-hip: \_\_\_\_\_  
High thigh: \_\_\_\_\_  
Low thigh: \_\_\_\_\_  
Knee: \_\_\_\_\_  
Calf: \_\_\_\_\_  
Ankle: \_\_\_\_\_



Sleeve: L: \_\_\_\_\_" R: \_\_\_\_\_  
Yoke: \_\_\_\_\_